

# SJnews

MONTHLY NEWSLETTER OF ST. JAMES'S

stjameswh.org

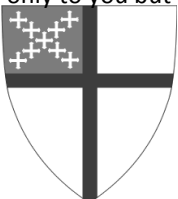
We are listening to you and to the Spirit

**T**HROUGHOUT the fall at St. James's, we held a number of small group discussions as part of our "St. James's 2020 - Envision our future" program. You have shared many of your thoughts and dreams for the future of this wonderful parish. Many are things we have been talking about for years, such as updating the Parish Hall and kitchens (desperately needed), and some ideas were wonderfully new and creative. Two themes that came up over and over were the desire for us to reach out into the wider community and to have some kind of intentional and helpful response to the refugee crisis, the likes of which have not been seen since World War Two.

We are about to begin two new very important and very exciting mission activities.

A few weeks ago, Foodshare approached me, by way of Doug Cooke, to see if we would be interested in becoming a distribution partner for their CSFP (Commodity Supplemental Food Program). West Hartford has one of the highest rates per capita of unserved residents over the age of 60 who qualify for "food stamps." St. James's has signed an agreement with Foodshare and the town of West Hartford to help them reach this important and overlooked population in our town. Beginning the third Thursday in January, we will be distributing boxes of non-perishable food provided by Foodshare to eligible individuals who have been identified, qualified and signed up by West Hartford Social Services. This food distribution will take place once a month between the hours of 10 and 2. Providing us with an opportunity to not only help serve this underserved portion of our population, but to build relationships with many who might feel isolated. This important new ministry will require 3 to 5 volunteers every third Thursday of the month. It is my hope that we can have the same volunteers every month to help in the building of relationships and consistency. If you are interested please contact Doug Cooke or me and we can provide you with more detail.

A couple of months ago, I preached on the sense of helplessness that so many of us are feeling in watching the refugee tragedy unfold before our eyes on the nightly news. At that time, I suggested that maybe there was something that we could do. With dogged persistence Bob and Betsy Smith explored the possibilities of our working with Integrated Refugee & Immigrant Services (IRIS). IRIS is a longstanding and very successful organization with deep ties to the Episcopal Church. On December 13th Chris George, the director of IRIS presented their work to an adult coffee forum after church and then more specifically over lunch to an action team made up of members from this parish and a couple of visitors from St. John's. During our December vestry meeting on the 15th, the vestry voted to go ahead and work with IRIS in co-sponsoring a refugee family in our community. We are currently in conversation with the rector and vestry of St. John's exploring what a joint partnership in this endeavor might look like. This is extremely important work and will take a strong commitment of time and energy from a number of people—possibly as many as 30. Rob Healy and Jess Henning have agreed to spearhead this endeavor. While many of you have already identified yourself as being interested in being a part of this sacred work, we are still looking for more volunteers. If you are interested please let Rob, Jess, Curtis or me know. I want to not only thank Rob and Jess for their willingness and faithfulness in stepping forward, but also Bob and Betsy Smith for getting this ball rolling. It is the dedicated, faithful, and prayerful witness of people like these who allow us to listen not only to you but to the movement of the Spirit amongst us.

To Learn, Live and Teach the Values  
of the Gospel of Jesus Christ



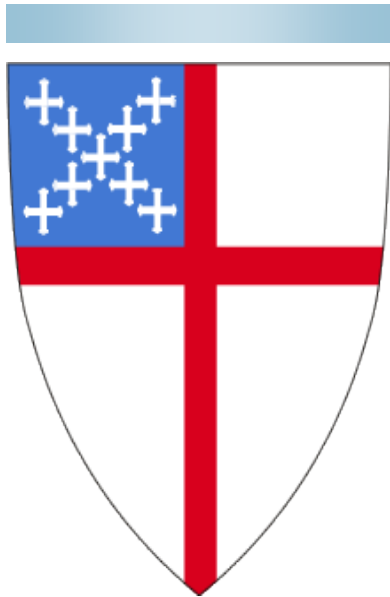
January 2016  
Volume 2, Issue 2

## Inside this issue

From the Rector's Desk.....	1
Treasurer's Report .....	2
From the Associate Rector.....	3
Forums & Mission Trip to Cuba.....	4
SJ Center for Children.....	5
Music & Liturgy.....	6
Everyday Christians.....	7
Mission .....	8
Around the Parish .....	8-9
Readings & Registry.....	10
Women of St. James's.....	10
January Calendar.....	11

## Highlights in January

- Church by the Pond, Saturday, January 2 at 2pm
- Second Sundays: Rhythms of Grace, 4pm / Youth Group, 5:30 pm on Sunday, January 10
- Martin Luther King, Jr. Day of Service, Monday, January 18
- Annual Chili Cook-off, Saturday, January 23 at 5:30pm
- St. James's Annual Meeting, Sunday, January 24, 10:45am
- Choral Evensong, Sunday, January 31 at 5pm in celebration of the Rev. Canon John Mitman's 50th anniversary of ordination.



## Vestry Corner

### Treasurer's Report—November 2015

**Current Position:** As the weather seems to reluctantly shift from fall to winter, the church finances experienced a small shift during November. The overall positive variance relative plan decreased from \$5,823 to \$4,217 during the month. In addition, while recent positive variances were due to expenses being less than budget, a shift occurred during the month and expenses are now higher than budget. Most of the change in expenses was due to the monthly property expenses being higher than expected. While expenses

now exceed budget, the impact on the overall variance was dampened due to an improvement in income. At the end of October, income was \$480 above plan. At then end of November, income is \$6,548 above budget. A shift in the Regular Contributions caused much of the change in the income figure. Expense monitoring will be a key focus during the last month of the year.

*“You cannot command or compel people into holiness, you cannot increase their spiritual stature one cubit by any kind of force or compulsion. You can do it only by sharing your life with them, by making them feel your goodness, by your love and sacrifice for them.”*  
 - Rufus M. Jones in The Double Search

### Income & Expense Summary:

Category	YTD Actual	YTD Budget	YTD Variance	Total Annual Budget
Income (+)	\$678,172	671,624	6,548 Above plan	752,400
Expense (-)	692,114	689,783	2,331 Above plan	756,900
<i>Net</i>	<b>(13,942)</b>	<b>(18,159)</b>	<b>4,217</b> <b>Positive variance to budget</b>	<b>(4,500)</b>

**Income:** Year-to-date (YTD) actual income is \$6,548 above budget (or 1.0% above budget). As of the end of October, YTD income was \$480 above budget (0.1%).

**Expense:** YTD expenses are currently \$2,331, or 0.3%, above budget. As of the end of October, expenses were \$5,340 (0.8%) below budget. Most of the expense categories continue to be slightly under or over budget.

## WARRANT

**St. James's  
Episcopal  
Church**

**will hold its  
Annual Meeting  
after the 9:30  
service on**

**Sunday,  
January 24**

**in the year 2016**

**All parishioners are  
asked to attend**

# From the Associate Rector

**D**EAR Ones,

For this millennial, there are few experiences so exciting as receiving mail. West Hartford does a terrific job of keeping my mailbox full of upwards of forty newspapers, and my mother does her part by sending cards for birthdays, major holidays, and not-so-major holidays like Arbor Day and National Just Send a Card Day.

Virginia Theological Seminary (VTS) sent me a lovely Lenten resource the other week about "Growing a Rule of Life." This workbook comes from the Society of Saint John the Evangelist (SSJE), an Episcopal monastic community of men in Cambridge, Massachusetts (yes, we have monks...and nuns too!). I commend their website to you for daily bits of wisdom, excellent sermons, and individual retreat opportunities ([www.SSJE.org](http://www.SSJE.org)), but now I want to direct your attention to Lent.

I know what you're thinking: "We just finished Christmas; it's not even Epiphany, and you want to talk about Lent?!? What ever happened to living in the moment?" Well finish this letter and then you can put all of this Lent talk up on a shelf until February 10<sup>th</sup> (Ash Wednesday).

This Lent, I will be following along with SSJE in "Growing a Rule of Life," using the abovementioned workbook as well as their online resources. I invite you to join me, and we will have an opportunity to touch base about this process as a larger group.

But first, just what is a rule of life?

According to Brother David Vryhof, "a rule of life is not a list of rules that we follow. The word 'rule' comes from the Latin word 'regla,' which is the word that gives us words like 'regularize or 'regulations.' And a rule is a way of regularizing our life, of bringing order and an intentional approach to our way of living.

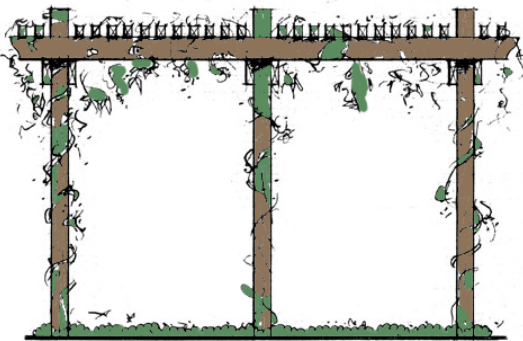
Rather than living randomly and just allowing ourselves to respond to the things that happen to us in life, a rule of life gives us a chance to step back and think about what it is that we value and how we intend to live. What are the values we want to express in our daily living?

Another image that has been used when talking about rules of life is in talking about a trellis—that a plant climbs up a trellis, and the trellis offers it direction for its growth and support along the way. It allows it to grow and flourish, whereas if the trellis were not there, it would be kind of lying in a heap on the ground and not prospering. So the trellis actually gives it direction and motion and gives it support."

Using the guide from SSJE, I hope we will begin to think about our values, lives, and then about digging deep and dreaming big about ways to live into a more abundant life with Christ.

Consider this is as something that might augment your experience of Lent—a discipline that doesn't necessarily involve giving up chocolate.

Your brother in Christ,



GROWING A  
RULE OF LIFE

[www.ssje.org/growrule](http://www.ssje.org/growrule)

## Youth Update

### Youth:

**Mark your calendars for Church by the Pond on January 3! We'll make sandwiches in the kitchen at 12:30 then head down to Bushnell Park for a 2:00 service and to hand out the lunches. Also, don't forget youth group on January 10!**

**If you haven't filled out a survey for youth events, please do so!**

## Youth Group Second Sundays

### January 10

**Dinner at 5:30pm  
Activity at 6:30pm  
Prayer at 7:20pm  
Depart at 7:30pm**

**Do your homework early  
and invite a friend!**

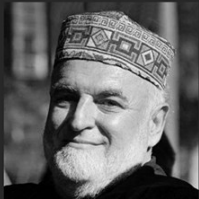


Bring a Friend to Church 3

# ST. JAMES'S COFFEE HOUR FORUMS

sunday morning education for everyday christians

JANUARY 10



**IMAM SAMI SHAMMA**  
TWO ABRAHAMIC FAITHS:  
ISLAM & CHRISTIANITY

FEBRUARY 7



**MARK MACGOUGAN**  
WHO WANTS TO BE AN  
EPISCOPAL MILLIONAIRE?

MARCH 13



**CHRIS DOUCOT**  
SAMARITANS TODAY:  
CHRISTIANS AS  
RACE TRAITORS

APRIL 17



**PETERSON TOSCANO**  
TRANSFIGURATIONS:  
TRANSGRESSING GENDER  
IN THE BIBLE

A promotional graphic for a mission trip to Cuba. The background shows a cityscape with a Cuban flag in the foreground. The text 'mission trip CUBA' is prominently displayed in yellow and red, with 'June 16-25, 2016' in a dark blue box below it. The website 'stjameswh.org/cuba' is at the bottom.

mission trip  
**CUBA**  
June 16-25, 2016  
[stjameswh.org/cuba](http://stjameswh.org/cuba)

Bring a Friend to Church 4



# From the Organist & Choirmaster

**O**n October 30 and November 1, members of our choir joined forces with eight voice majors from the Hartt School of Music to perform the chorus scenes for Tosca (Puccini), one of the most timeless and cherished operas in the repertoire. This particular production was conducted by Doris Kosloff, directed by Sondra Kelly, and presented by Connecticut Concert Opera at Hoffman Auditorium, University of Saint Joseph.

While a performance of this kind is not part of our regular season, there is precedent dating back to the 1970s when St. James's Choir performed both Tosca and Aïda (Verdi) at the Hartford Civic Center. In fact, it is not uncommon for church choirs to sing in opera productions. While the Metropolitan Opera maintains its own children's chorus, many of the major European houses use cathedral choirs when a particular opera calls for a children's ensemble. Such opportunities provide fun detours from the regular schedule of services, yet the quality of the music is just as rich and rewarding.

Preparing a chorus for opera is not unlike readying one for a musical theater production, except that in opera we strictly follow the composer's original score, and the music is never amplified! In musical theater, solo and ensemble numbers are often transposed to suit the individual singers in a particular production, or the songs are re-arranged. In opera, musicians must be trained to use their full voices from the bottom of their register to the very top, and sing in the original keys. Since opera is "through-composed" – essentially meaning that the music stops only for applause or an intermission – it is not possible to alter keys and rearrange the music without creating musical discord and awkwardness.

In Tosca, and opera in general, the composer wrote appropriately for a children's choir. The vocal range fits very well, and the words and music are exciting and fun to sing. The parts for the adult chorus in Act I are equally engaging because both women and men get to sing in their higher ranges at full voice. In Act II, both children and adults combine to sing the "Coro Inferno" from far stage right. This Cantata in the Classical style is stunning in its beauty and provides a stark contrast to the tense exchange on stage between main characters Mario Cavaradossi (Tosca's lover) and Baron Scarpia (Rome's morally corrupt Chief of Police).

Overall, the experience was a success for everyone involved, and reviewer Larry Kellum noted that the chorus was "Excellent." In even more excellent news, Maestro Kosloff has invited the trebles back to provide the chorus for Hansel and Gretel, Engelbert Humperdinck's beautiful and charming opera. When the choristers asked me when we would begin rehearsals, I responded, "after England!"



## LITURGY



## AND MUSIC

### Important Dates

**January 31**

Choral Evensong at 5pm  
*In celebration of the Rev.  
Canon John Mitman's  
50th anniversary of his  
ordination*



### Help Send Choir to England!

We continue to raise funds for our England Trip by selling Stop & Shop cards! You can purchase these at face value, and we earn money because Stop & Shop donates 5% of your purchase to help fund our choir trip. You can also donate cards back to St. James's feeding ministries. Use your cards for holiday gift giving as well! Ellen Dollar and Deb Ross will be available at coffee hour each week with cards. Or contact them at [5dollars@comcast.net](mailto:5dollars@comcast.net) or [dross2631@gmail.com](mailto:dross2631@gmail.com).

Bring a Friend to Church 6

# Everyday Christians—Abby Fisher Williamson

By The Rev. Curtis A. Farr

*In this new series, we get to know members of St. James's a little better by asking them about how they came to be part of the community and how their faith informs their daily life and work.*

Abby Fisher Williamson's work researching local responses to immigrants is grounded in empirical data, but her faith informs her passions for love, justice, and equality.

Since 2003, Abby's interest in immigrant incorporation—the ways in which local communities respond to culturally differing newcomers—inspires her extensive research into the subject. She has the year off from teaching political science and public policy at Trinity College, Hartford in order to wrap up some of her research. "Some people call it a sabbatical," Abby says, "some call it research leave, and most people when they hear that think, 'Oh, you have the year off!' (laughter). Actually what it means is that I have a book deadline in April."

Using case studies in places like Lewiston, Maine; Wausau, Wisconsin; and Yakima, Washington, Abby finds that by nearly any measure, immigrants are incorporating successfully. In the long-term, they bring vitality and development to societies, so the question is how to minimize short-term growing pains in order to maximize long-term benefits. When local communities experience influxes of immigrants, there are certain conditions that allow for better interaction between the immigrants and those residents who were there prior to the immigrants' arrival.

"Those conditions can be hard to achieve," Abby says, and her interest in is identifying how to make both sides of the equation work. Ideal conditions include fostering a level playing field, which is difficult with immigrants from vastly different cultures and varying resource needs. They also include gaining the endorsement of authority figures and creating collaborative projects in which settled residents work with immigrants on a common goal. "A lot of what I'm writing about is the ways communities can think about doing this work creatively." One obvious setting in which these goals are more easily achieved is in the classroom. Abby says that teachers can establish the kinds of conditions where contact between these groups can create the suspension of stereotypes and future collaboration. "If you have a group of kids in a classroom, they are—at least to some extent—on the same level; they are all third graders. And then you have the teacher endorsing the idea that interacting with one another and treating each other fairly is important. And then you have the teacher developing ways in which they can reach shared goals together."

It's much more difficult among adults," Abby says. "Adults have few places where they come together where they are on an even playing field. Faith communities are communities that could serve this purpose, and in some cases are serving this purpose. A Roman Catholic church in Norristown, PA is a great example. Since Norristown has become home to a large Latino population, St. Patrick's has found ways to include parishioners from all walks of life in Mexican and Irish cultural celebrations, through the commonality of shared faith traditions."

Abby's parents raised her in Congregational churches in New Hampshire and Ohio, though her father's roots were firmly Episcopal. They attended every Sunday and sang in the choir; her parents were involved in other church activities. In her late adolescence, Abby stopped attending church regularly but later—in her twenties—became part of Grace Episcopal Church in Medford, Massachusetts. It was around this time that her entire family left the church.

When her much younger brother hit his adolescence and began resisting any involvement in a faith community, a minister visited their house to answer questions; their parents hoped that the conversation would lead to Abby's brother's confirmation. Instead the discussion swayed Abby's brother *and* mother to cease their involvement with church altogether.

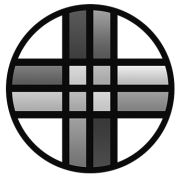
From Abby's point of view, her brother's objection to religion is based partially on the belief that people join faith communities out of the fear that religiosity is required to secure a good afterlife. With a similar upbringing, Abby's perspective on faith communities is quite different from her brother's.

"I think that growing up in a faith community where there was a community of adults that I knew, that I saw every Sunday, and that were working to do good in the world...seeing that as a child, I am certain, shaped my own interest in wanting to make a difference in the world—wanting to contribute...It shaped my sense of justice and fairness." Abby's work as an academic requires that she deal with empirical data, whether or not her findings promote what she thinks would be good for the world. "It's not that my faith shapes the recommendations that I write about, but it does shape my desire to have a more just world."

And as much as her faith shapes her desire for justice, her work shapes her faith. "The way I see God is in connections among human beings. Part of what I study is social networks, so the idea that the connections among humans and the trust that we form are what allow us to take collective action...the essential message of Christianity is of radical love, so the way I see God is in those connections among human beings, is in those networks we form, is in our ability—despite amazing odds—to be resilient and work together."

Abby attends St. James's with her husband Adam and twin daughters Lyla and Anya.

# Mission



ST. JAMES'S  
**MISSION  
COMMISSION**

### Ongoing needs:

Food Collection/West Hartford Food Bank: Please continue to bring your food donations to the wagon in the cloister or the bins located around the church. Donations are distributed to the SJ feeding programs and West Hartford Food Bank. Remember to check expiration dates! St. James's and The WH Food Bank will not accept items that have expired dates. Please see our website for specific needs.

**January Mission:** The annual **Rev. Dr. Martin Luther King, Jr. Day of Service** will be Monday, January 18th. Look for volunteer sign-ups soon! Groups will be working at A Hand Up, My Sisters Place, and Food Share. A group including some of the parish youth will spend the day at the Hartford Catholic Worker.

We will also kick off the annual **Operation Fuel** campaign to help those in need of fuel assistance. Please make a donation and help keep our neighbors warm this winter!

### In December:

Thank you to everyone who supported our fundraising events this month by purchasing Christmas Trees, Wreaths and Poinsettias, and thank you to everyone doing the selling too! A thank you also to all who purchased gifts for the Angel Tree Project and Toys for the annual toy collection. To all who volunteered their time in organizing, thank you! These outreach and mission projects were a big success again this year.



## Operation Fuel 2016

**O**PERATION Fuel is a private, nonprofit organization that provides emergency energy assistance to state residents who cannot pay their utility bills and do not qualify for government assistance, or have exhausted their benefits and have nowhere else to turn.

One in five Connecticut households cannot afford energy, but the other four can change that! You can be part of the change; give the gift of heat and light. **Please make your check payable to St. James's Church, with the notation "Operation Fuel" on the memo line.** Thank you for your warm-hearted response to this outreach mission.

# Around the Parish

## Adult Education in January/February

*Small groups and forums at 11am*

### January 10

#### **TWO ABRAHAMIC FAITHS: ISLAM AND CHRISTIANITY**

**Imam Sami Shamma**

*Coffee Hour Forum in the Dining Room*

We are pleased to welcome Imam Sami Shamma for our Coffee Hour Forum on January 10th. He will speak about various points of connection between Islam and Christianity. Bring your questions and curiosity, and invite your friends for this timely forum. Shamma serves as the Islamic chaplain and adjunct professor at Hartford Seminary and holds an M.A. in Islamic Studies and Christian Muslim Relations. He is currently working on his Doctor of Ministry.

### February 7

#### **WHO WANTS TO BE AN EPISCOPAL MILLIONAIRE?**

**Mark MacGougan**

*Coffee Hour Forum in the Dining Room*

On February 7th, Mark MacGougan will host Who Wants to Be An Episcopal Millionaire, a game show experience that will be as educational as it is humorous. Mark is known for his great sense of humor, and this will surely be a forum you will not want to miss.

## Annual Chili Cook-off!

*Saturday, January 23 at 5:30pm*

**C**alling all chili makers! On **Saturday, January 23** we'll gather at St. James's in the dining room beginning at 5:30pm for the annual chili cook-off. You are invited to make your favorite batch of chili and enter it in the contest. Awards will be presented for the three best chilis and the best presentation—so please be creative!

If you decide to enter a batch of chili please make enough for 8-10 people. Beverage and cornbread will be provided as well as hotdogs for all the Yankees and Gringos in the bunch.

No matter what your age, do not miss this opportunity to gather for some good food, healthy competition and great fellowship. You don't have to make a pot of chili to enjoy the event—come with a healthy appetite, and as always, invite your friends!





## Monthly Group Meetings

### *Women's Evening & Men's Discussion Groups*

**J**OIN the women of the parish and guests for a festive potluck supper on **Thursday, January 14** beginning at 6pm in the parish room. Bring something to share with the group if you decide to attend. Great food, wine, and fellowship for all.

JOIN the men of the parish and guests for a discussion group on **Saturdays, January 9 and 23** beginning at 7:45am in the parish room. Various religious topics are discussed and refreshments are provided.

## Parish Office Closings

**T**HE parish office will be closed **Friday, January 1** for **New Year's Day** and **Monday, January 18** for **Martin Luther King Day**.

## Readings and Registry

### Sunday Lectionary

#### **Second Sunday after Christmas, January 3**

Jeremiah 31:7-14; Psalm 84  
Ephesians 1:3-6,15-19a; Matthew 2:13-15,19-23

#### **The Baptism of Our Lord, January 10**

Isaiah 43:1-7; Psalm 29  
Acts 8:14-17; Luke 3:15-17, 21-22

#### **Second Sunday after the Epiphany, January 17**

Isaiah 62:1-5; Psalm 36:5-10  
1 Corinthians 12:1-11; John 2:1-11

#### **Third Sunday after the Epiphany, January 24**

Nehemiah 8:1-3, 5-6, 8-10; Psalm 19  
1 Corinthians 12:12-31a; Luke 4:14-21

#### **Fourth Sunday after the Epiphany, January 31**

Jeremiah 1:4-10; Psalm 71:1-6  
1 Corinthians 13:1-13; Luke 4:21-30

## Parish Prayer List

### **Those in our parish family**

Jeffrey, Greg, Justin, Joan & Elsa, Ann, Michael, Michelle, Audrey, Claire, Nicole, Margaret & Richard, Ruth, Anne, Brian, Natalie & Harry, Stuart, Olivia, Walter, Frank, David, Liz, Jon, Elly, Justin, Tom, and Betsy.

### **Those in our extended parish family**

Maria, Pam, Kevin, Mary Ann, Jenifer, Nancy, Jeff, Ashley, Carol, John, Christina, Jean, Jeff, Roger, Mario, Jennifer, Leslie, John, Justin, Karen, Bea & David, Heather & Bryan, Robert, Sarah, Claudia, David, Patricia, Bob, Jessie, Ryan, Dick, Linda, John, Quinn, Arroll, Chris, Joanie, Rob, Teresa, Dave, Alvin, Karen, Bob, Audra, Parker & Cynthia, Ted, Olivia, Brent, Kaitlyn, Ann, Kara, Henry & Irene, Patricia, Jonathan, Kate, Carrie, Josh & Yvette, Dan, Derrick, Family of Nancy, Grace, Kyle, John & Rita, and Betsy.

### **Those Serving in the Military:**

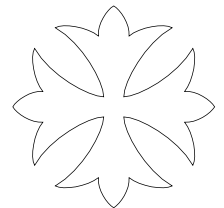
Andrew Clark, Michael P. Clarke, Wensley Barker IV, Mark Ulrich, Julian C. Barker, Andrew Huntsman, and Ed Vera.

## Baptisms

*Sunday, December 27*

**John Douglas DeLibero**

*Son of Anthony and Laura DeLibero*



## Deaths

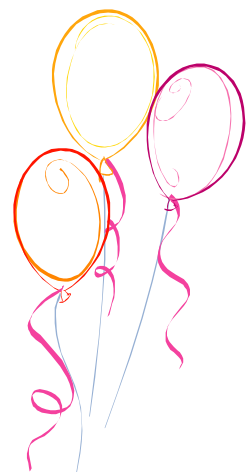
*Friday, December 18*

**Stephen P. Cobb**

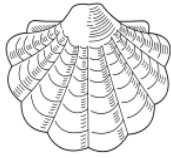
## January Parish Birthdays

*Children and Youth*

Avery Sherrill, 5  
Ava DeLaCruz, 6  
Charlotte Willson, 6  
Lucy Adams, 9  
Matthew Barrows, 9  
Chloe Toutain, 20  
Nora Jane Sherrill, 23  
Lizzie Davis, 25  
Kait Healy, 25  
Harry Keating, 26  
Ben Dollar, 27  
Joseph Mozingo, 27



# Women Of St. James's Programs for January 2016



## **Tuesday, January 5**

Dr. Ellison Findly, Professor of Asian Studies  
and Religion, Trinity College  
*Use of Art to Christianize India*

## **Tuesday, January 12**

Winter Picnic and Silent Auction

## **Tuesday, January 19**

Ashley Washburn  
*"Asante Sana for Education" in Tanzania*

## **Tuesday, January 26**

Vaughn Mauren  
*Mozart's Requiem*

*Looking Ahead:*

## **Tuesday, February 2**

Cindy L. Rodriguez  
Author for Young Adults  
*When Reason Breaks*

## Holiday Tea & Bake Sale

*Thank You!*

**T**HIS year's Holiday Tea was well attended and another big success. Thank you to all who helped with this event! Whether you baked, helped with the setup and decorations, packaged and wrapped the holiday goodies, gave a monetary donation, provided entertainment, or supported the event by attending, the Holiday Tea was a success because of you!

## United Thank Offering

*Counting Our Blessings*

**O**N Sunday, November 22 our parish presented their United Thank Offerings in thanksgiving for God's daily love, mercy, and blessings. Our tangible offerings of \$1,263.42 will extend the love of God to others through numerous worthy projects to alleviate human need and expand mission and ministry to others. Thank you for your very generous donations.

## Seamen's Church Institute

**T**IME now for the annual appeal for your left-over Christmas cards – we use the picture part to make small greetings to go in each Christmas -at-Sea package that will go out next year. When you are finished enjoying those you receive, tear off the message (or I can do that) and leave the pictures in the church office marked for me. Thanks.

*Fran Cobb*

## The Washington National Cathedral

*A look at one of the institutions that  
benefits from the Women of St. James's  
yearly outreach*

**T**HE Cathedral as a spiritual home for the nation has its power in offering this vision of a nation and a world that can be healed...of having at the heart of a nation a place that insists that in a world where religions are divided, nations are divided, races have been divided, that we are made for a deeper harmony and that there's a God at work. All that is an enormously hopeful, healing vision to offer the nation and the world. That's at the heart of the Cathedral's mission.

*Cathedral Dean Samuel T. Lloyd, III*



## St. James's Episcopal Church

19 Walden Street  
West Hartford, CT 06107

Phone: 860-521-9620

Fax: 860-521-5756

E-mail: [info@stjameswh.org](mailto:info@stjameswh.org)

Website: [www.stjameswh.org](http://www.stjameswh.org)

NON-PROFIT ORG.  
U.S. POSTAGE  
PAID  
Permit 3071  
Hartford, Conn.

## Address Service Requested



### The Clergy

The Reverend Robert C. Hooper, III	Rector
The Reverend Curtis A. Farr	Associate Rector
The Reverend Canon Douglas T. Cooke	Priest Associate
The Reverend Dr. Molly O. Loudon	Priest Associate
The Reverend Dr. Borden W. Painter	Priest Associate
The Reverend Elsa P. Walberg	Priest Associate
The Reverend Terry M. Wysong	Priest Associate

### The Staff

Heidi Cotter	Financial Secretary
Cheryl C. Batter	Administrator
Nathan Bourne	Seminarian
Priscilla Hooper	Director of Family Ministries
Randall Martini	Sexton
Vaughn Mauren	Organist & Choirmaster

### The Vestry

Ann Cooke	Senior Warden
David Dynowski	Junior Warden
Michael Sherrill	Treasurer

### Term Ending 2016

Michael Fitzsosa, Carol McDermott  
Eleanor Michael, Peter Peterson

### Term Ending 2017

Kathy Bolt, Ben Parish  
Michael Shuey, Judith Stahl

### Term Ending 2018

Diane Duva, Kimberly Lytle  
Carolyn O'Sullivan, Robert Smith